

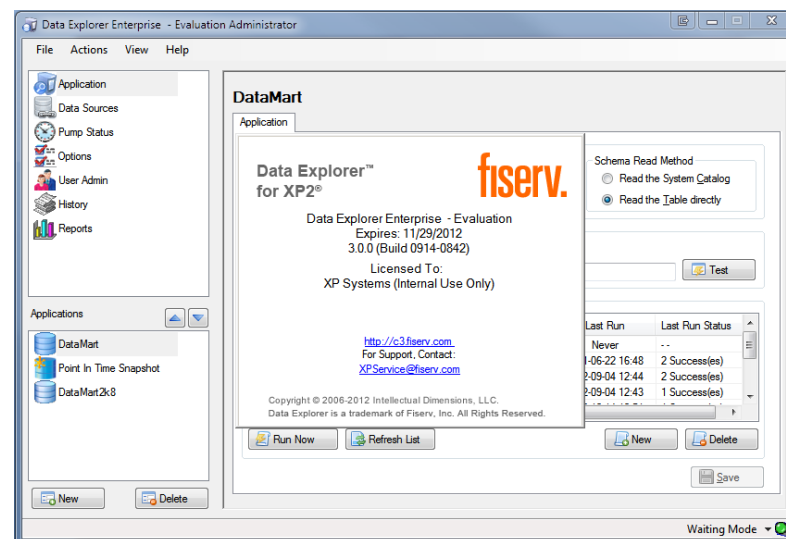


INTELLECTUAL DIMENSIONS LLC

EMPOWERING CREDIT UNIONS TO WORK
SMARTER SINCE 2001

Data Explorer

Capabilities & Features Review



The Data Explorer Solution

- Moment-In-Time data access
 - Query data for any business date captured, trend and compare different days over time for trending
- Expanded data retention
 - Retain historical data far longer than is reasonable (or cost effective) on the core systems
- “Single Place of Truth”
 - All relevant data together in 1 database
- Data Models you already know

Key Features

- Dynamic detection of schema changes in the Source Database *on the fly*
- Designed from the ground up specifically to support multiple data sources, *from multiple systems*
- Easy to use
 - Administration training takes less than an hour
- End user maintainable
- Built in SQL database maintenance plans

Architecture

- Windows Server 2012
- All current versions of SQL Server
 - Can coexist with other SQL applications *
- Data Sources
 - Any ODBC Compliant or SQL Server relational database
 - Includes non-traditional data sources
 - Text/CSV
 - Excel
 - Access

Flexible

- Integration points at load start and completion
 - Pre & Post Load Actions
- Automated file exports including FTP upload/download capability
- Easy integration with XP2 file update programs
- Large and active install base and end-user community.

Fast & Self Maintaining

- Fast
 - Most XP2 data warehouse loads complete in under an hour, even for large sites.
- Variety of load types and scheduling options
- Built in detection of Holidays and non-business days
- Several scheduling and load options
- Load notifications

Quick Deployment

- Out-of-The Box load definitions included for:
 - XP2
 - Lynxgate (CAT)
 - Digital Insight for Home Banking & Bill Pay
 - PM Systems, and Cavion are easy to setup as well
 - FICS (External Mortgages)
 - Fiserv Collections
- Plus the ability to add/customize your own without support or added professional services

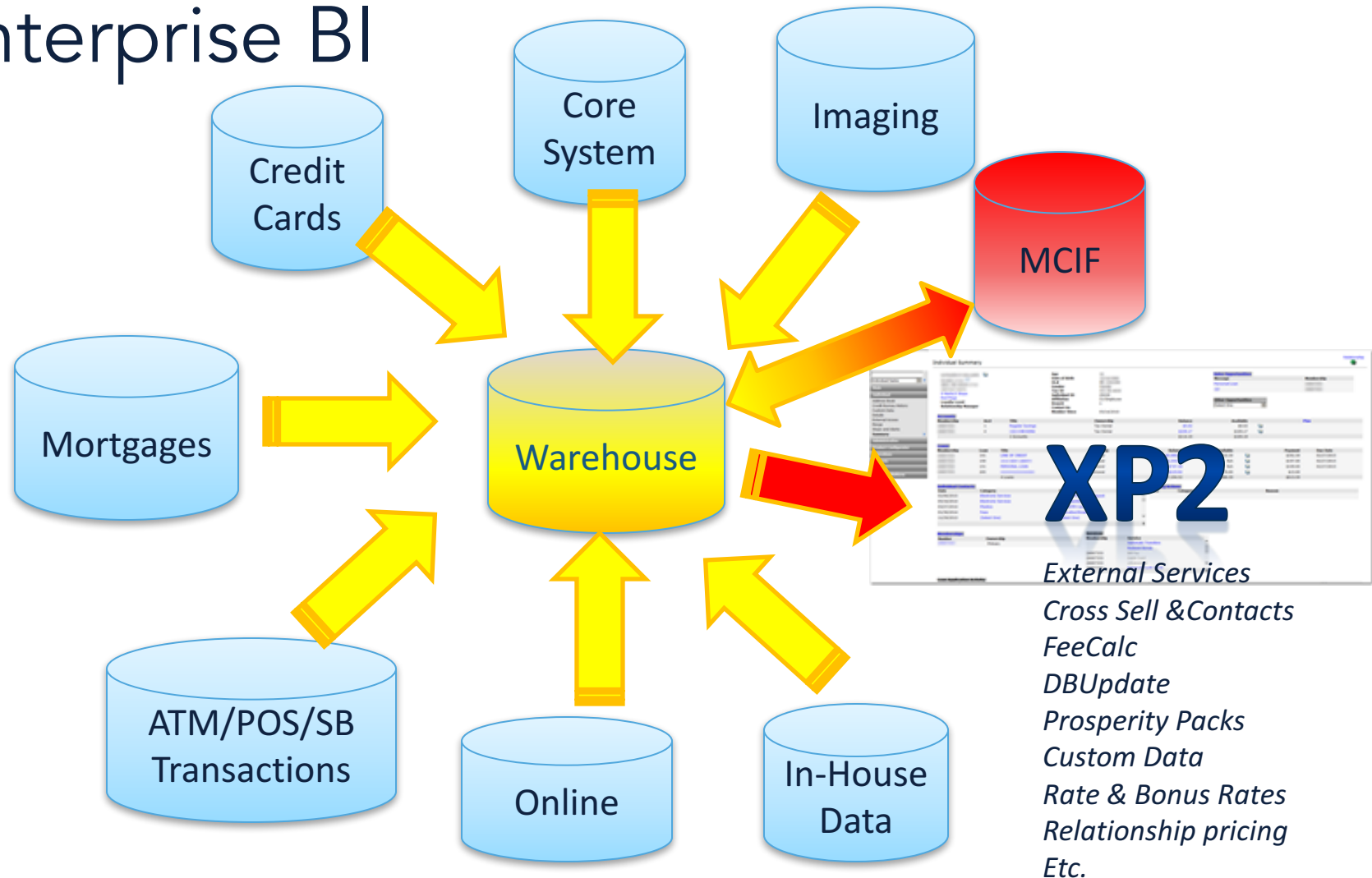
Enterprise Data Source Examples

- XP2 (DB2RW)
- LynxGate® (Cat)
- Digital Insight
- PM Systems
- Corillian
- Cavion
- BDI (E- Statements)
- In-house Merger Sources
 - Galaxy® From Fiserv
 - Open Solutions Inc (OSI) (Proprietary)
 - UltraData
- Co-op ATM Switch
- Nautilus®
- Raddon MCIF
- Fiserv EFT
- CUMA Mortgage
- FICS (Mortgage Origination/Servicing)
- CU Members Mortgage
- MeridianLink™
- Certegy (Credit Card Processor)
- FIS (Credit Card Processor)
- Equifax™
- Wisdom™
- Prolog™
- SEG Employee Lists
- CUNA IRAs
- Harland Check Orders
- CardWizard®
- Cisco CCX

Display Tools

- You decide how data should be presented and distributed
 - Match tools with skill, requirements, budget
 - iDashboards
 - Crystal Reports
 - ID vantEdgePoint
 - SSRS (SQL Server Reporting Services)
 - SharePoint/Performance Point
 - ...and so on...

Enterprise BI

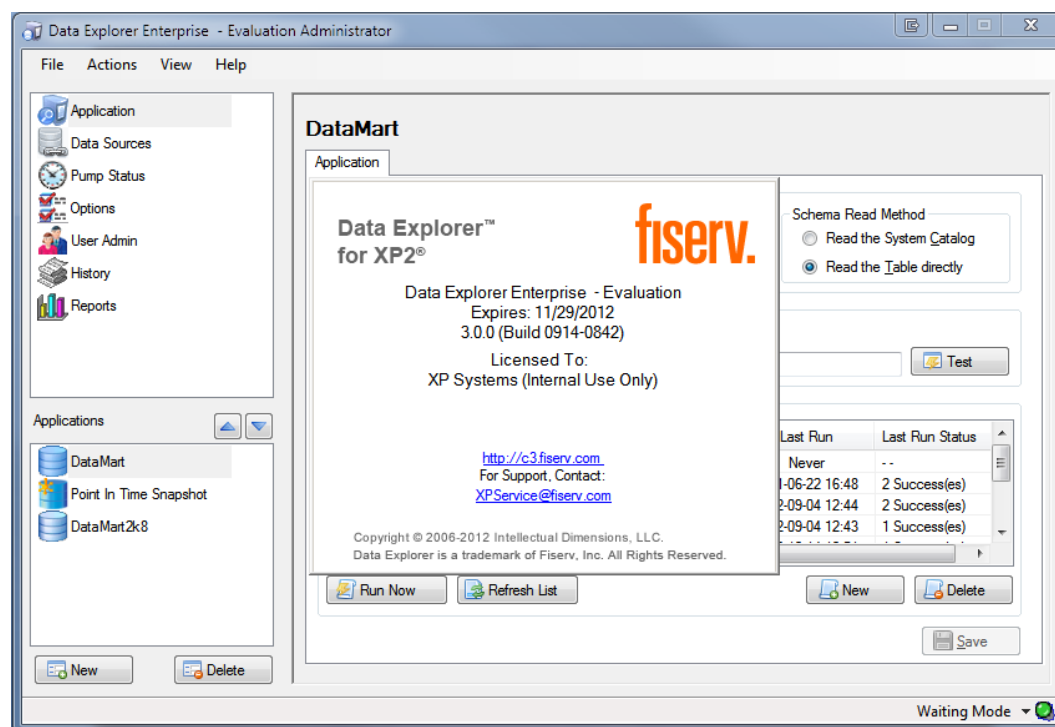




INTELLECTUAL DIMENSIONS LLC

EMPOWERING CREDIT UNIONS TO WORK
SMARTER SINCE 2001

Data Explorer



Data Sources: Point
Data Explorer to any
Data source you can
connect to

Load Sets: Instructions
to move data from
your source data to the
Warehouse

DataMart

Application

Options

Application Type: DataMart

Description: Main Credit Union Data Mart

Notifications

☒ On Success Email Address: jchapman@intellectualdimensions.com

☒ On Failure

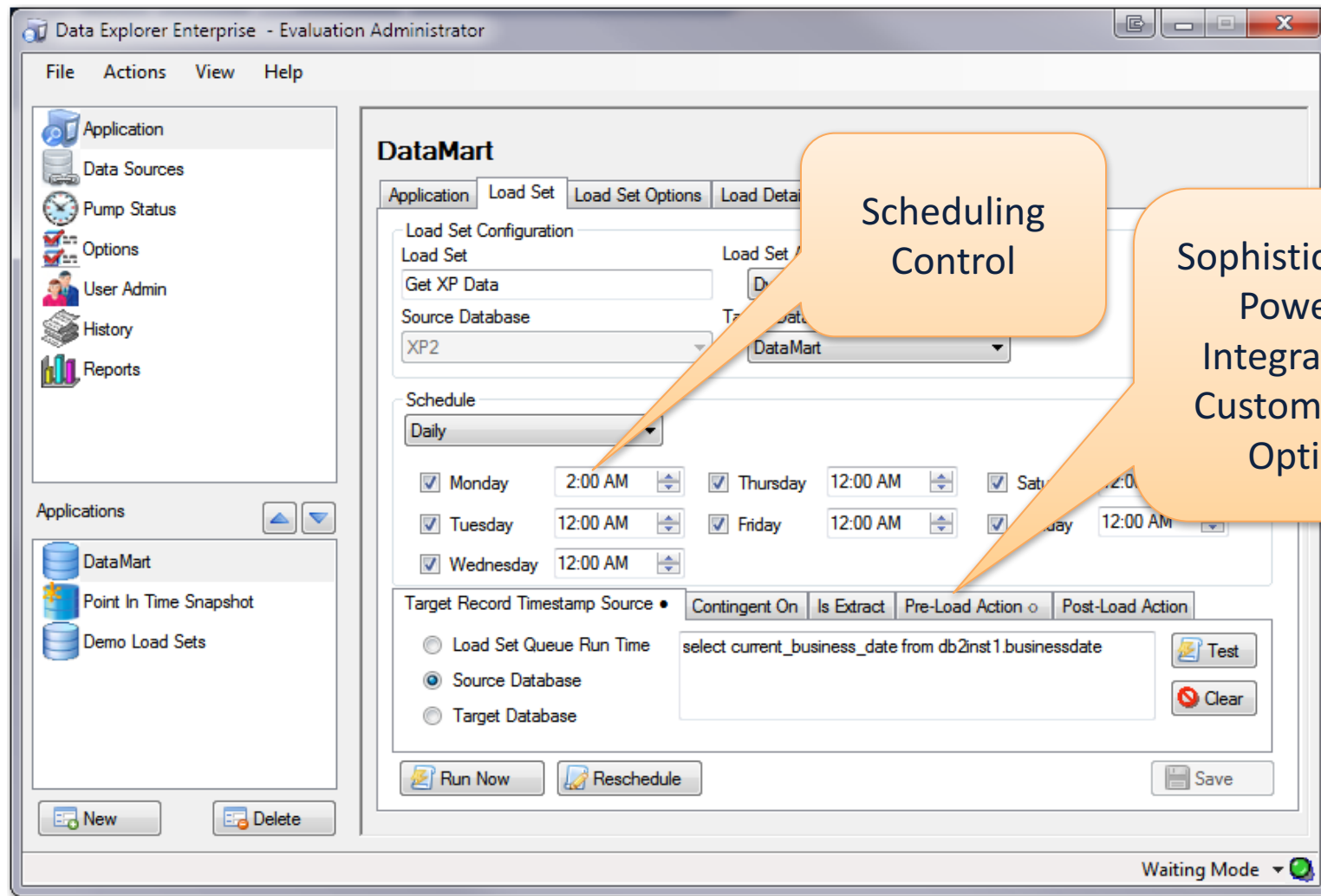
Test

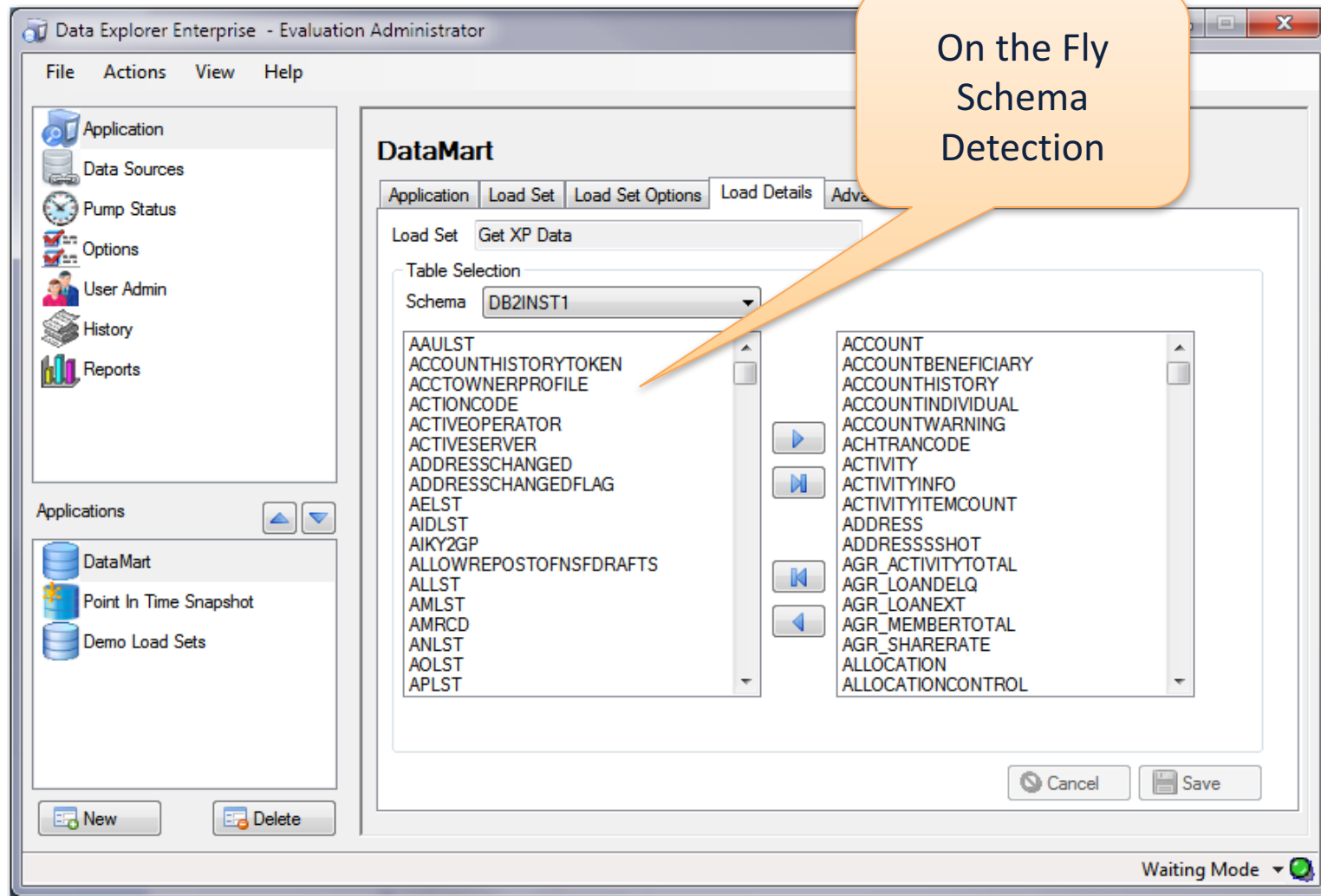
Load Sets

Load Set Name	Schedule Type	Next Due Date	Last Run	Last Run Status
Get XP Data	Daily	2012-10-19 03:00	Never	--
CiscoCCX	On Demand	--	2011-06-22 16:48	2 Success(es)
Get (Selected) Live Da...	On Demand	--	2012-09-04 12:44	2 Success(es)
Get Catoperations	On Demand	--	2012-09-04 12:43	1 Success(es)

Run Now Refresh List New Delete Save

Waiting Mode





Flexible Load Control Options

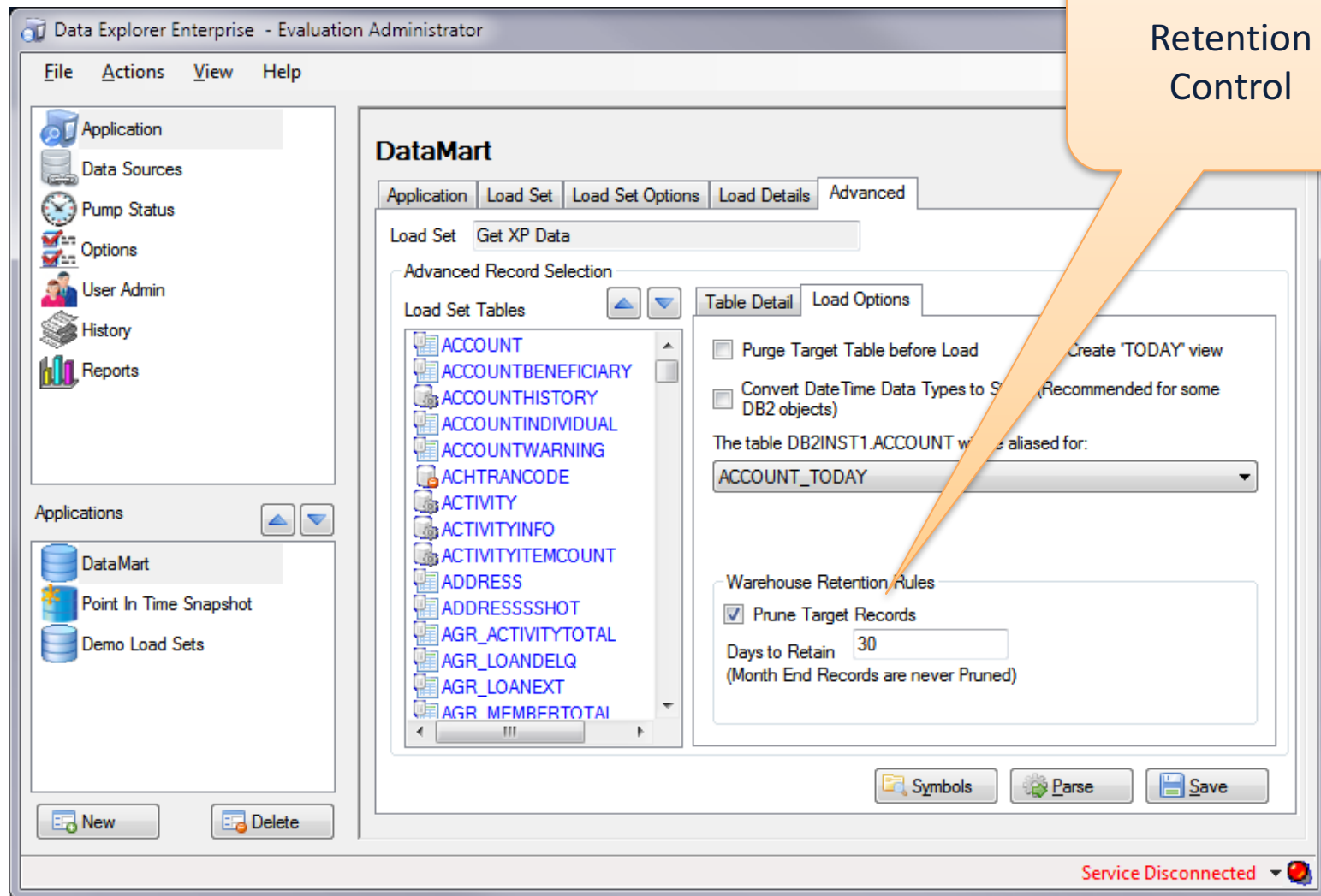
The screenshot shows the DataMart Administrator application window. The left sidebar contains a tree view with nodes: Pump Status, Options, User Admin, History, and Reports. Below this is an 'Applications' section with icons for DataMart, Point In Time Snapshot, and Demo Load Sets. At the bottom of the sidebar are 'New' and 'Delete' buttons. The main window has a tabbed interface with 'Application', 'Load Set', 'Load Set Options', 'Load Details', and 'Advanced'. The 'Load Set Options' tab is active, showing a list of tables on the left and a 'Table Detail' panel on the right. The 'Table Detail' panel is for the 'ACCOUNTHISTORY' table and includes a 'Load Options' sub-tab. It displays a table of column details and a SQL query.

Column Name	Data Type	Len	Prec.	Scal
DL_LOAD_TS	Datetime2	23	255	255
DL_LOAD_DATE	Date	10	255	255
XPTIMESTAMP	Datetime2	16	26	6

```
select :LOADTIMESTAMP: as DL_LOAD_TS, :LOADDATE: as DL_LOAD_DATE  
a.*  
from DB2INST1.ACCOUNTHISTORY a  
WHERE ACCOUNT_HISTORY_ID  
  > GetMaxValueFromTarget(ACCOUNT_HISTORY_ID, -1)
```

At the bottom of the window are 'Symbols', 'Parse', and 'Save' buttons, and a status bar indicating 'Waiting Mode'.

Retention Control



Data Explorer Enterprise - Evaluation Administrator

File Action

Applications
Data Sources
Pump Settings
Options
User Admin
History
Reports
Users Guide

Written between 01/15/2016 and 01/20/2016 Refresh List

CU Warehouse
Point In Time Snapshot
Hourly Loads
Dashboard Support
ClearView

Load Set	Run Date	Duration	Status	Process
CU Members Mortgage	1/17/2016 4:15:06...	00:00:09	Success	PACUSQ
Get XP2 Data	1/17/2016 3:05:06...	01:55:54	Success	PACUSQ
Get NCAT Data	1/17/2016 1:00:06...	00:02:15	Success	PACUSQ
CU Members Mortgage	1/16/2016 4:15:05...	00:00:09	Success	PACUSQ
Get XP2 Data	1/16/2016 3:04:05...	01:51:59	Success	PACUSQ

Table Name Records Status

Processing Post Load Action		Process
Processing Pre Load Action		Process
ACCOUNT	179237	Success
ACCOUNTBENEFIT	124	Success
ACCOUNTHISTORY	15178	Success
ACCOUNTINDIVIDUAL	217635	Success
ACCOUNTWARNING	2187	Success
ACCTOWNERPROFILE	99	Success
ACHTRANCODE	30	Success
ACTIONCODE	66	Success
ACTIVITY	968	Success
ACTIVITYINFO	417	Success
ACTIVITYITEMCODE	0	Success

Load Details Database Size

Table Name Processing Post Load Action

Start Time 05:01:02 End Time 05:01:02

Elapsed Time 00:00:00 Records 0

Avg Throughput (Records Per Minute)

Details Statement Used

PostLoadAction processing completed. Procedure [IDDL_MASTER.ID.PreLoad_Foreign_Process_De] ran with return code: (1) and reported: Foreign Process History written to: IDDL_MASTER.ID.LoadTime_Foreign_Process_Hi

Waiting Mode

Detailed Load History & Notifications

Implementation Assistance

- Deployment Planning
- Server Sizing & Capacity Planning
- Skill Development
- Custom BI training & project assistance
- SQL Server DBA Training
- Process Improvement Analysis & Best Practice Training & Assistance

Do You Need BI & Warehousing?

- What role does *data* play in your credit union?
 - Post Mortem Reporting
 - Reporting on where you have been and what you have done in the **PAST?**
 - Regulatory & Compliance “Necessary Evil”
 - “Oh, Marketing does lots of stuff”
 - *AKA Dependency on external systems and “proprietary black boxes”*
 - Drives Product Development, Process Improvement, Member Retention, Growth & Strategic Planning
 - Improves Member Service, Empowers Managers and Decision Makers.

How Ready Are You?

- Technology
- People

Business Intelligence Maturity Model

